



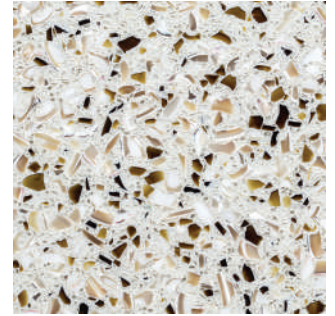
White Pearl



Sky Pearl



Sage Pearl



Amber Pearl



Alpine White



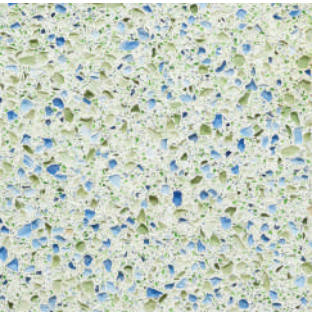
Snow Flurry



Latte



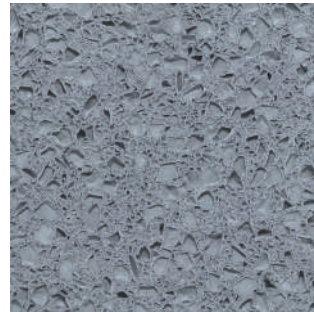
Forest Fern



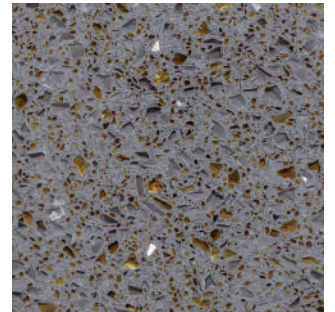
Denim Moss



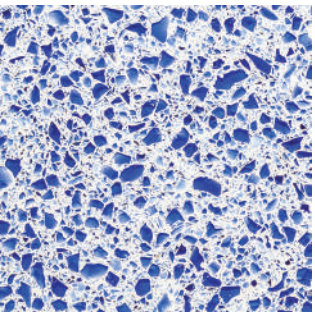
Pearl Grey



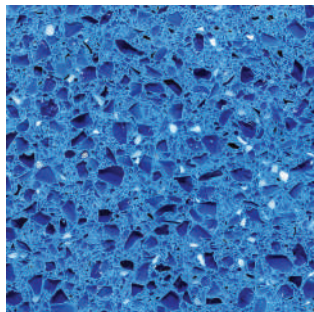
Fogbound



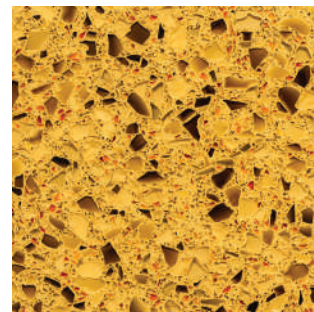
Gotham Grey



Cobalt Ice



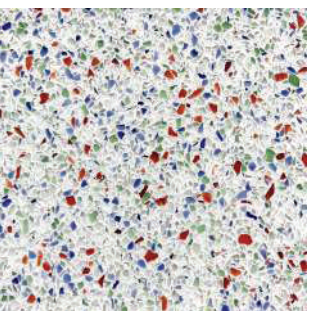
Sapphire Snow



Tuscan Sunset



Moroccan Red



Confetti

## STANDARD COLOR COLLECTION

Custom color development is available for projects that meet production criteria; contact IceStone LLC to begin your custom color project.

Note: There may be some difference from printed material to actual product. Please visit [icestoneusa.com](http://icestoneusa.com) to order samples.

## DISCOVER WHAT'S BENEATH THE SURFACE



### Style + Sustainability

We created our award-winning surfaces with the health of our employees, our customers, and the planet in mind. IceStone is manufactured in our state-of-the-art facility in the historic Brooklyn Navy Yard. We use just three core ingredients: 100% recycled glass, portland cement, and pigment.

Whether using IceStone for countertops, vanities, conference tables, window sills, reception or retail exchange areas, IceStone will help you realize your vision elegantly and responsibly. Since 2003 our customers have helped divert over 16 million pounds of glass from landfills.

- Approximately 75% recycled content by weight
- No petrochemicals or plastic resins
- Cradle to Cradle Certified™ Silver & Bronze
- Published Health Product Declaration™ for entire product line
- Recycled content and material health disclosure help contribute to LEED points
- NSF 51 Certified for splash zone applications in food-related establishments
- UV and scratch-resistant
- Commercial and Residential 10-Year Limited Warranties
- Every slab made in Brooklyn, NY

### Specifications

Slab Size: 52.5" x 96.5" x 1.25" nominal (35 sq. ft.)  
Weight: 570 lbs/slab, 16.3 lbs/sq. ft.

Property	Test Standard	IceStone Results
Compressive Strength	ASTM C-109	13,000 -16,000 psi
Flexural Strength	ASTM C-203	890 psi
Specific Gravity	ASTM C-97	2.31 g/cm3
Porosity/Absorption	ASTM C-642	0.18% unsealed
Chemical Durability	ASTM C-1260 for ASR reactivity	0.49% 300 cycles
Freeze Thaw	ASTM C-666	0.05%
Fire Rating	ASTM E-84	Class 1(A) Flame spread index 0 Fuel contribution 0 Smoke density index 0
Coefficient of Static Friction	ASTM C-1028	0.69 polished dry 0.61 polished wet 0.71 honed dry 0.62 honed wet 0.85 sandblasted dry 0.77 sandblasted wet
Food Equipment Materials	NSF 51	Certified

### Installation + Maintenance

IceStone surfaces are fabricated, installed, and maintained much like natural stone. Please refer to the IceStone Fabrication Guidelines and Care & Maintenance Guidelines for more details.

